

Technology for Wellbeing

To activate the natural healing processes in tissues, the Opton 8000 uses constant laser radiation which is able to treat large areas of the body. The variety of settings and the possibility of directing the output through several positions allow the operator to structure every treatment according to needs. Opton 8000 is also available in a variety of configurations, constant high performance, thanks to the experience of Mectronic Medicale.

Every laser in the Opton 8000 range is suitable for a wide range of pathologies, producing beneficial effects on the treated area:

- Arthrosis
- Tendinopathies
- Muscular contracture
- Sciatica
- Arthritis
- Lombalgia
- Cervicalgia
- Carpal tunnel syndrome
- Slipped disk
- And many others...

Opton 8000 strengths:

- A wide range of possible settings
- Pathology library with pre-set treatments
- Movement of the source
- Patient safety system
- High performance technology



MECTRONIC MEDICALE srl
Via Orio al Serio, 15
24050 Grassobbio
Bergamo (Italia)

Tel +39 035656080
Fax +39 035657361
www.mectronicmedicale.com
info@mectronicmedicale.it

Rev October 2013



Opton
8000 

Scanning Laser



Opton 8000

A point of reference

Solid build quality together with excellent results make **Opton 8000** a successful scanning laser: the point of reference for scanning laser therapy. The result of 30 years of experience built up by Mectronic Medicale in the production of laser equipment and laser sources, Opton 8000 is available in a range of configurations, and is able to meet any needs and adapt to any specific therapy.

The most complete range of scanning lasers

The scanning lasers designed and produced by Mectronic Medicale make up a vast range of wavelengths and powers, allowing the treatment of all pathologies and the maximization of therapeutic and analgesic effects.

High performance technology

Research, latest generation technology, and the use of high performance materials have contributed to the success of Opton 8000.



Maximum safety

All Opton 8000 systems feature **Patient-Safety** stop button. Furthermore, thanks to **Area Control**, laser emission is blocked if the power setting is too high for the chosen area (EMP control = maximum allowed emission).

A complete range

Opton 8000 offers a range of configurations and powers: this is guaranteed by Mectronic Medicale technology, with over 30 years of experience at the forefront of laser equipment production.



Opton 8000 Bi - Power

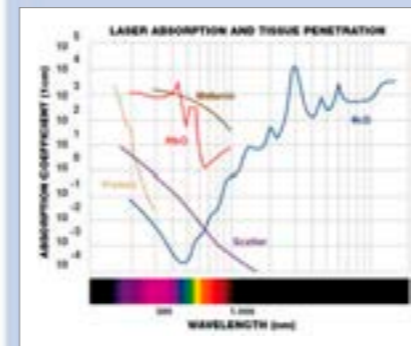
The experience and consolidated know-how of the Mectronic Medicale laboratories have led to the introduction of new configurations, including the CO₂ **Opton 8000 Bi-power** version. Opton 8000 Bi-power simultaneously offers analgesic characteristics typical of CO₂ lasers and the bio-stimulant effects of IR.

Opton 8000 Bi - power 980

CO₂, from 20W and IR 980 laser from 2W

Opton 8000 Bi Power 810

CO₂, from 20W and IR 810 laser from 2W



CO₂

New configurations

Opton 8000 features a configuration for every application. In this way a variety of pathologies can be treated and the effects and benefits of laser therapy can be maximized. In this way the **Opton 8000 Red** and **Opton 8000 1064** are unique.

Opton 8000 Red

650nm 500mW, the evolution of He-Ne lasers.

Opton 8000 1064

The first scanning laser with 1064 nm 4W source (Nd:YAG improved replacement).



Scanning Laser Semiconductors

Technical features	8000 L	8000 M	8000 S	8000 Red	8000 1064
Power requirements (230V, 50Hz)	180 VA	180 VA	180 VA	180 VA	180 VA
Temperature range-operating (°C)	10÷35	15÷35	15÷35	15÷35	15÷35
Temperature range-storage(°C)	-20÷60	-20÷60	-20÷60	-20÷60	-20÷60
Interlock	Yes	Yes	Yes	Yes	Yes
Calibration control	Electric	Electric	Optical	Electric	Optical
Timer	Yes	Yes	Yes	Yes	Yes
Safety stop	Yes	Yes	Yes	Yes	Yes
Laser power regulation	0÷50 mW	0÷500 mW	0÷4 W	0÷500 mW	0÷4 W
Laser class	III b	III b	IV	III b	IV
Aiming Laser typical (650 nm)	3mW	3mW	3mW	3mW	3mW
Wavelength (nm)	810/980	810/980	810/980	650	1064
Weight (Kg)	22	23	24	23	24
Dimensions (mm)	950x1680x560				
Certification	CE0068				

Scanning Laser CO₂

Technical features	8000 C	Bi-Power 980	Bi-Power 810	Bi-Power 1064
Power requirements (230V, 50Hz)	310 VA	310 VA	310 VA	310 VA
Temperature range-operating (°C)	10÷35	15÷35	15÷35	15÷35
Temperature range-storage(°C)	-20÷60	-20÷60	-20÷60	-20÷60
Interlock	Yes	Yes	Yes	Yes
Patient-safety	Yes	Yes	Yes	Yes
Calibration control	Optical	Optical	Optical	Optical
Area Control	Yes	Yes	Yes	Yes
Timer	Yes	Yes	Yes	Yes
Safety stop	Yes	Yes	Yes	Yes
Laser power regulation	0÷20 W	0÷20 W + 2W	0÷20 W + 2W	0÷20 W + 2W
Laser class	IV	IV	IV	IV
Aiming Laser typical (650 nm)	3mW	3mW	3mW	3mW
Wavelength (nm)	10600	10600 + 980	10600 + 810	10600+1064
Weight (Kg)	24	24	24	24
Dimensions (mm)	950x1680x560			
Certification	CE0068			